



GET THE DIRT

Excellent People. Excellent Clients. Excellent Results.
January 2025

LMI COLORADO



Mite think infestation....

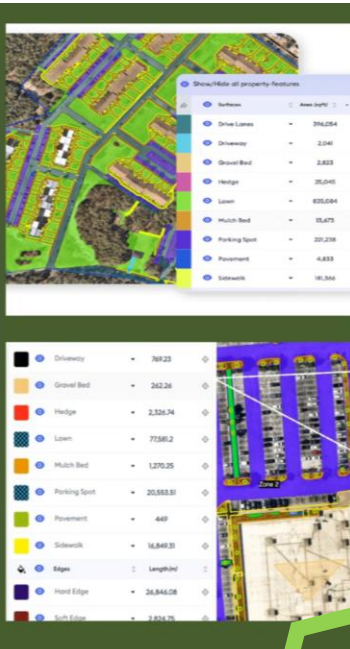
If you think mites are inactive in the winter months that is incorrect. Winter mites are active starting as early as November and stay active through March in Colorado. They are doubly frustrating, their activity is difficult to see day to day however their damage creates quite an eye sore as winter turns to spring.

Mites lay their eggs in spring, and they hatch in late fall, and they eat on the grass as they grow. While mites munch on the blades, water and nutrients are being sucked out of your turf. The result is yellowing turf that will eventually die. When spring comes and the turf should be turning green is when the damage starts to be seen. Even through late fall and winter is the best time to catch the mites using your turf as a buffet, they are still nearly impossible to see. Mild winters create the best environment for them. For more information contact your Account Manager.

Are you following us on LinkedIn?
If not, this is what you are missing...

Curious on how we generate your maintenance bid?

We once used a measuring wheel and counted every tree and shrub on a property. Today we used Attentative AI. They map out our properties measure gravel beds, mulch beds, turf, native, and count trees. Our teams look at the condition of the property and the plant material and put everything together to generate a maintenance proposal for your property.

<https://www.linkedin.com/company/lmi-colorado>

PRO Green EXPO

January 28-30th

Ever wonder how we stay current and in the know. The ProGreen EXPO is the only green industry conference in the Rocky Mountain Region of its kind. More than 5,000 green industry professionals gather every year at the [Colorado Convention Center](#) in Denver to gain vital knowledge and skills to improve business, educate employees and discover the latest information for the upcoming season.

Since 1996, ProGreen EXPO has grown into the place where the green industry meets. Through education, networking, and skill-building, we ensure that our industry remains an asset to communities and an engine of job creation.

January Promotion 5% off winter watering. When the time is right you need to **WATER WATER WATER..** Below are some quick facts from CSU Extension <https://extension.colostate.edu/topic-areas/yard-garden/fall-and-winter-watering-7-211/>

- Water trees, shrubs, lawns, and perennials during prolonged dry fall and winter periods to prevent root damage that affects the health of the entire plant.
- Water only when air and soil temperatures are above 40 degrees F with no snow cover.
- Established large trees have a root spread equal to or greater than the height of the tree. Apply water to the most critical part of the root zone within the dripline.



Colorado Adventure **OURAY HOT SPRINGS**

Splash and play in Ouray's sulfur-free hot springs pool. After an exhilarating adventure on foot, or climbing up a wall of ice, or a pleasant day of shopping Ouray's unique businesses, soaking in the hot springs and viewing the snow-covered canyon walls from



After Hours 303-294-9000 or 719-569-7037